

GRAVITY STATION: 67702 Aasiaat Heliport

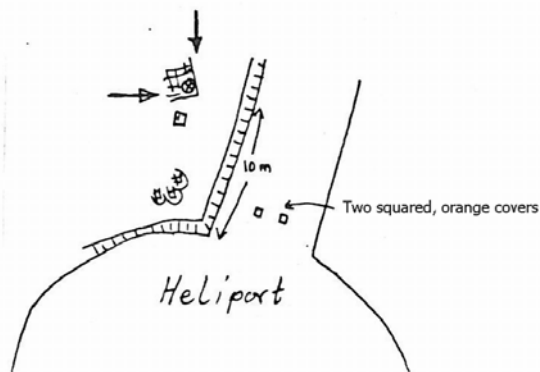
Coordinates (° ' "): 68 42 10 -52 52 47

Elevation (m): 27

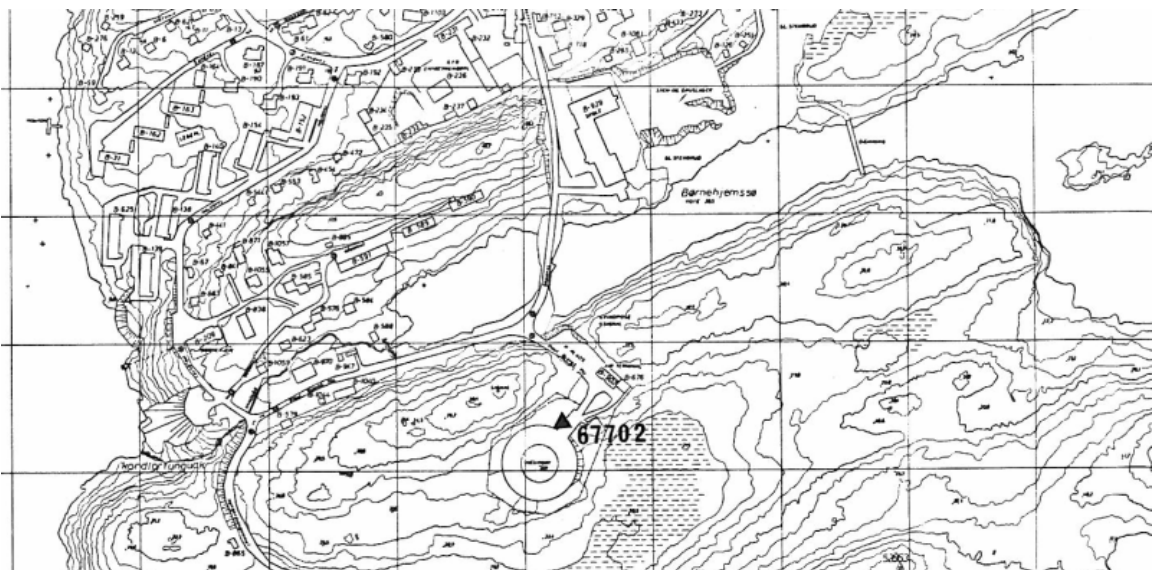
Gravity value (mGal): 982474.95

Monumentation: Aluminium Plate

Aasiat heliport. About 10 m by the road from heliport and about 1 m W of road on big boulder.



Station seen from NW



The station is located on a flat rock outcrop NE of the helicopter landing pad circle. It is 1m W of the drainage ditch and 10m N of the edge of the pad circle. The station is monumented with an aluminum disc.

JUN 1982

Datum: IGSN71

Described by:
RF, KE, PW 1982