

# GRAVITY STATION: 48202 Upernavik KGH office

Coordinates (° ' "): 72 47 14 -56 09 20

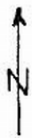
Elevation (m): 17

Gravity value (mGal): 982735.47

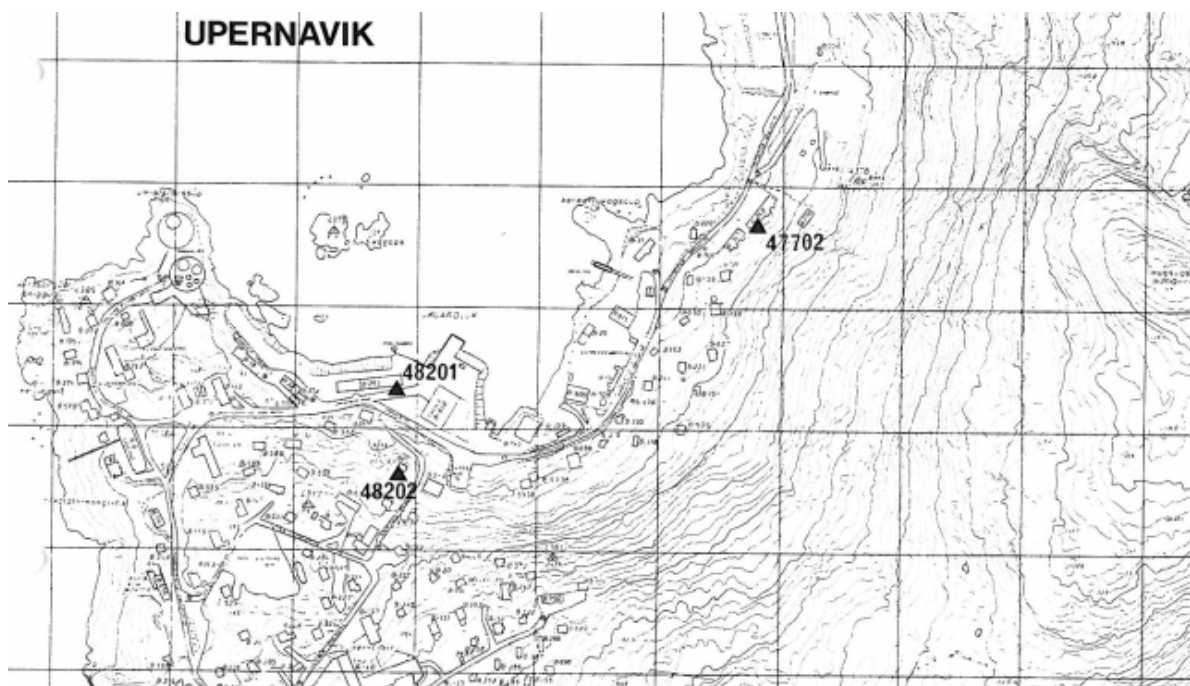
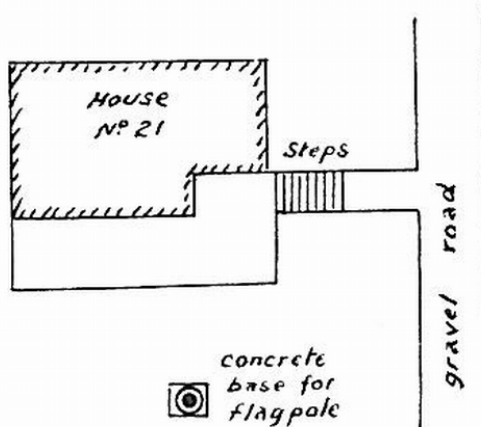
Monumentation:

Station on old concrete foundation behind old KGH-office, building B-21.

Station is located on a concrete base for a flagpole. The base is on a rock outcrop immediately S of house # 21. The station is not monumented.



JUN 1982



Datum: IGSN71

Described by:  
RF, KE, PW 1982