

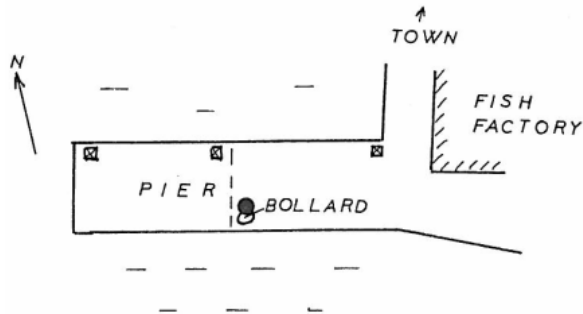
GRAVITY STATION: 768 Tvøroyri Pier

Coordinates (° ' "): 61 33 12 -06 47 50

Elevation (m): 1.5

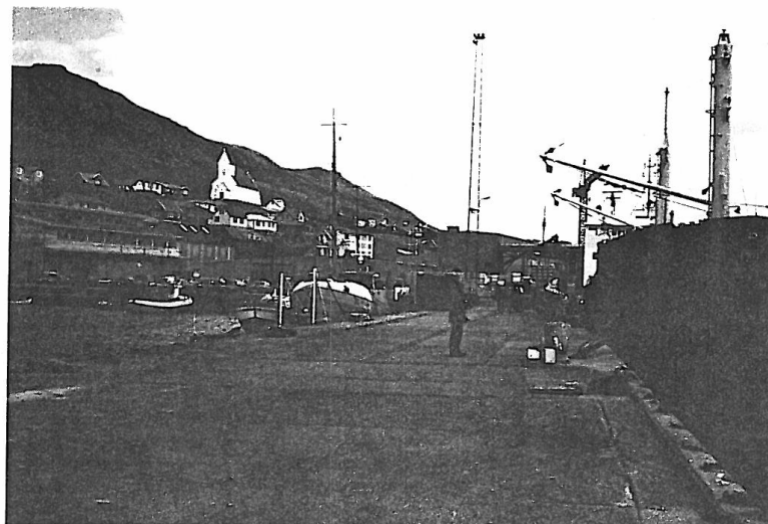
Gravity value (mGal): 982051.97

Monumentation:



Tværå kaj. Ret foran betonpullert midt på kajen. Stationen er nær ved IGSN station 21716 P, men kajen er forlænget og punktet tabtgået.

Tvøroyri pier. In front of concrete bollard in the center of the pier. Station is close to the IGSN station 21716 P, but pier has been extended.



Datum: IGSN

Described by:
RF 1984