

GRAVITY STATION: GI 112 Denmark / Copenhagen GAI archive

Coordinates (° ' "): 55 44 12 35

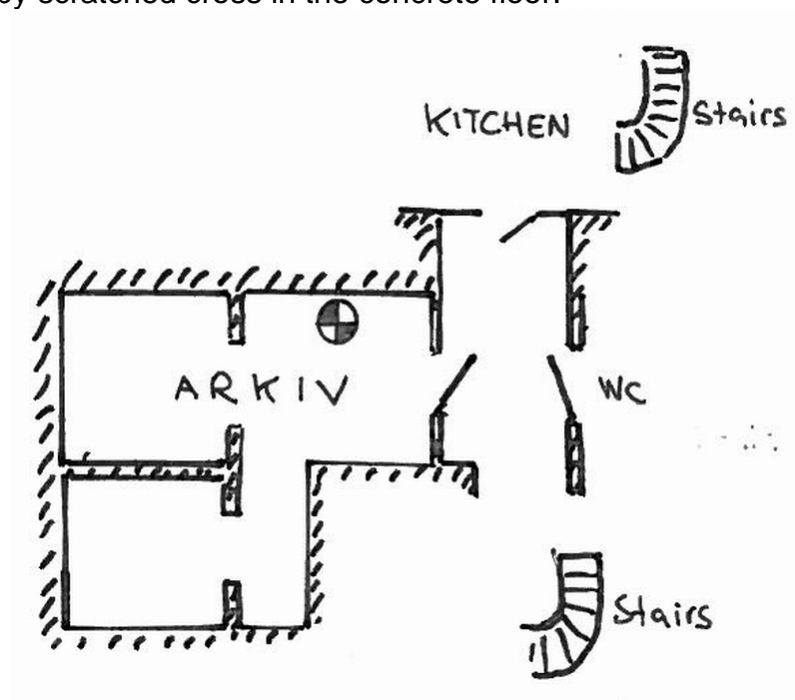
Elevation (m):

Gravity value (mGal): 981550.31

Monumentation: Cross

In archive cellar (arkivkælder) at Geodætisk Institut , Geodetic Dept. II, Svanemøllevej 66, Hellerup.

Station marked by scratched cross in the concrete floor.



Tied to Copenhagen Gamlehave at several occasions using LCR meters 466 and 495.

Described by:
RF 1982